



 smart eye

3D Head & Eye Tracking

Understanding, supporting and predicting human behavior in complex environments

Smart Eye Pro

The world's most advanced remote eye tracking system

Smart Eye Pro, a true multi-camera system, is scalable from 2 up to 8 cameras allowing 360-degree head and eye tracking. Free and wide placement of cameras both horizontally and vertically makes it ideal for many environments, setups and situations.

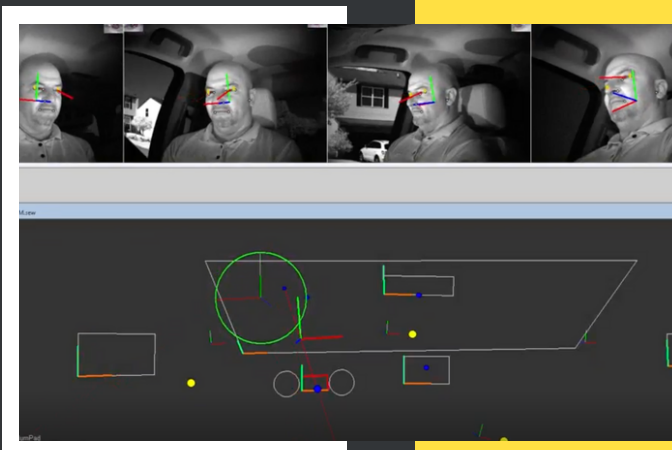
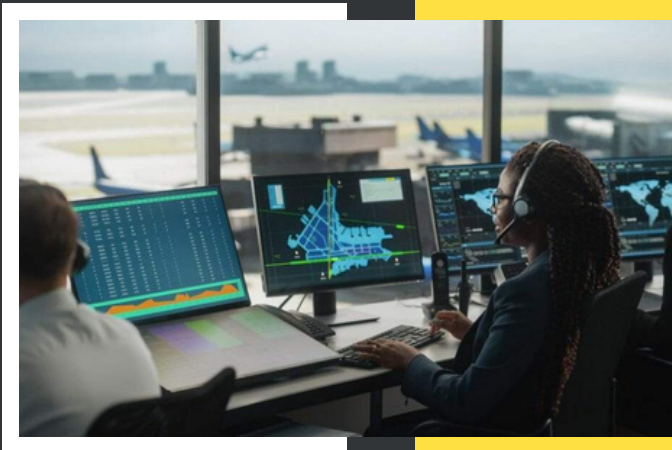


SCALABLE

- Accommodates single screens up to the most complex environments on single PC / algorithm
- Scales from 1-8 cameras to support a field of view up to 360 degrees
- Supports wide ranging horizontal/vertical fields of view

RESEARCH GRADE PERFORMANCE

- Largest combined headbox / visual field while maintaining superior accuracy
- 3D technology delivers head and eye measurements in absolute XYZ coordinates
- Industry leading algorithms & data availability regardless of complexity of application



Use Cases

Adaptable for complex environments when being non-intrusive truly matter.



Instrumented Vehicles



Multi-Screen & Control Room



Cockpit



Simulators



Single Screen

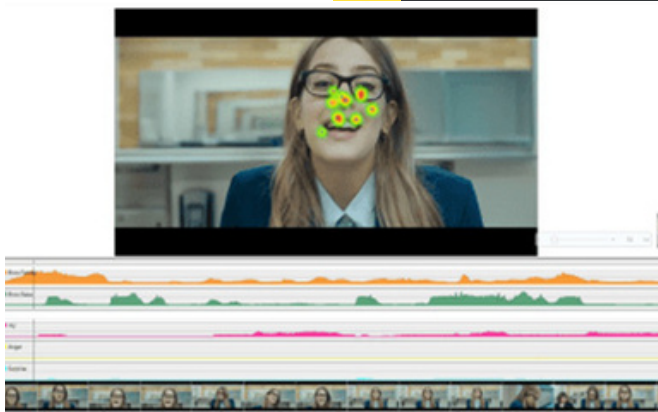


Long Range



FLEXIBLE

- Customizable with free camera placement to track all desired key research areas
- Adaptable and fit to purpose for multiple applications within same tab
- Tracks up to 3m and operates independent of lighting conditions



ANALYSIS & VISUALIZATION TOOLS

- Static recording of scene with wide field of view and real-time gaze overlay
- API supports integration with multitude of simulators and 3rd party analysis tools
- 145+ time-stamped, data fields (CSV) and via UDP/TCP/CAN for analysis (e.g. MATLAB)



Smart Eye is the global leader in Human Insight AI, technology that understands, supports, and predicts human behavior in complex environments. We are bridging the gap between humans and machines for a safe and sustainable future. Our multimodal software and hardware solutions provide unprecedented human insight in automotive and behavioral research — supported also by Affectiva and iMotions, companies we acquired in 2021.

Our industry-leading eye tracking systems and iMotions biosensor software enable advanced research and training in academic and commercial sectors. Affectiva's Emotion AI provides the world's largest brands and market researchers with a deeper understanding of how consumers engage with their content, products, and services.

In automotive, we are leading the way towards safer and human-centric mobility through Driver Monitoring Systems and Interior Sensing solutions. Our technology is embedded in next-generation vehicles and available as a standalone aftermarket solution for existing vehicles, fleet, and small-volume OEMs.

Smart Eye was founded in 1999 and is headquartered in Sweden with offices in the US, UK, Germany, Denmark, Egypt, Singapore, China and Japan. A publicly traded company since 2016, our customers include NASA, Nissan, Boeing, Honeywell, Volvo, GM, BMW, Geely, Harvard University, over 1,300 research organizations around the world, 90 of the world's largest advertisers and 26% of the Fortune Global 500 companies.

If you would like to see a demo of Smart Eye's eye tracking solutions, please [contact us](#) today.



smarteai.com/contact